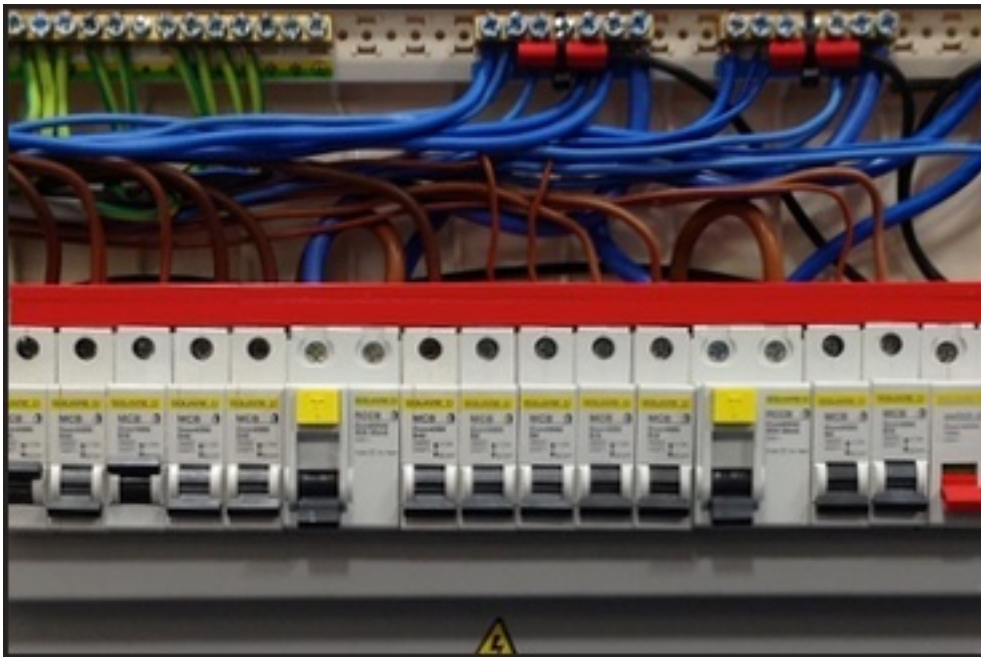


THERMARESTOR

technology transforming fire safety



Thermarestor Installation guide

Consumer Units & Distribution Boards

These instructions are intended for use by “competent” persons, as defined by the HSE. The Thermarestor system must be installed by a qualified electrician, in accordance with the current edition of the IET Regulations for Electrical Installations (BS7671 Requirements for Electrical Installations).

The Thermarestor System devices are suitable for installation within consumer units and distribution boards, both single and three phase. They are designed to be fitted within boards having protective devices with a modular width of 18mm or multiples thereof.

Fitting Thermarestor System Devices

Isolate the electrical supply to the consumer unit / distribution board in accordance with Safe Isolation procedure

Remove the front cover.

1. Prepare the carriage by checking continuity. The device should be open circuit when measured across the blue and red wires which form the signal cable. If there is continuity then the device should be returned to the supplier for a replacement.
2. Install two of the supplied cable ties into the grooves on the rear of the carriage.



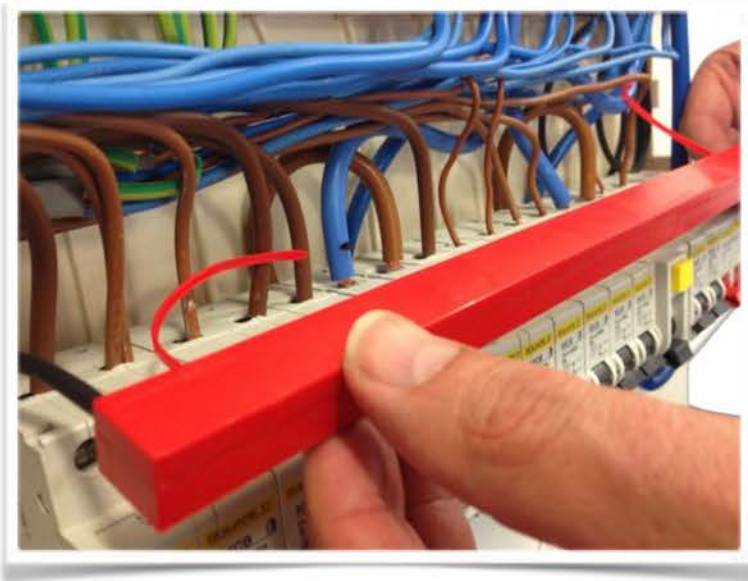
3. Ensure that the cable ties are pulled tight so the head of the cable tie is close to the carriage.



4. Complete this so both cable ties are prepared.



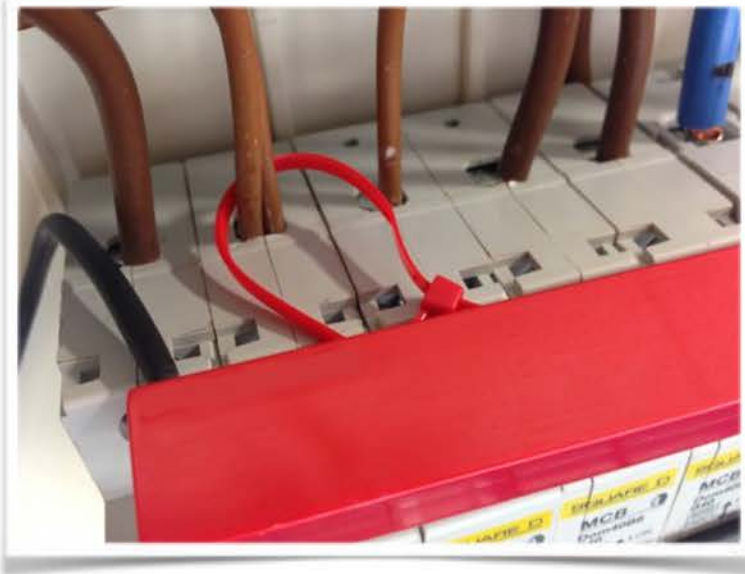
5. Place the prepared carriage against the cables connected to the MCB's and ensure that the cable ties are adjacent to an incoming cable.



6. Ensure the cable tie's are placed behind the cable and the black signal cable is free and not causing an obstruction.



7. Place the free end of the cable ties into the head .



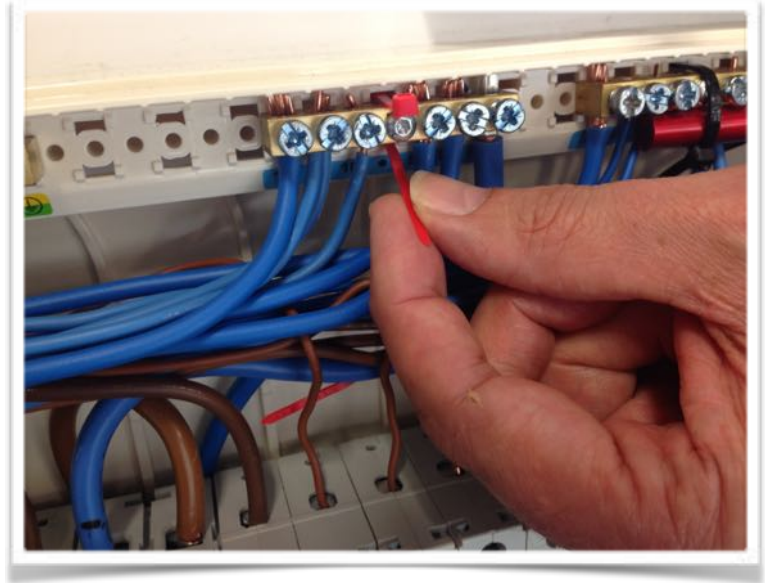
8. Once the free end is installed into the head, pull tight, ensuring that the carriage is held close to the outgoing circuit conductor.



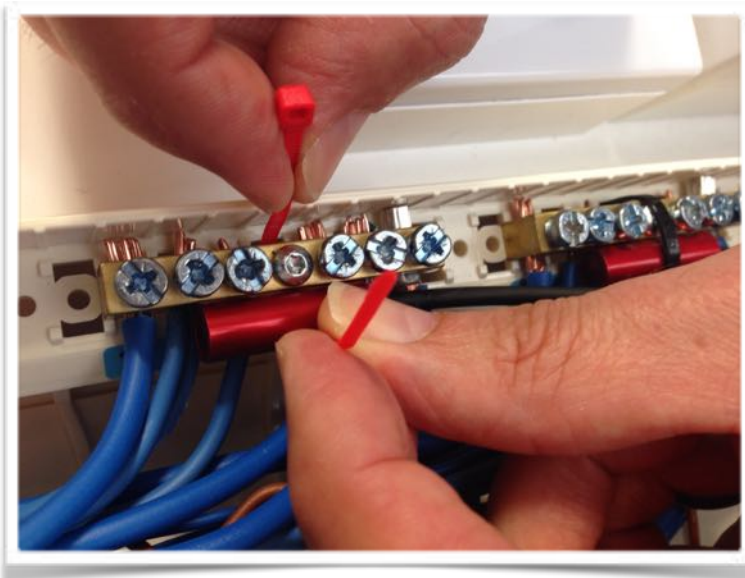
9. Once both cable ties are pulled tight the carriage should be secure and in close contact with the MCB connection terminals.



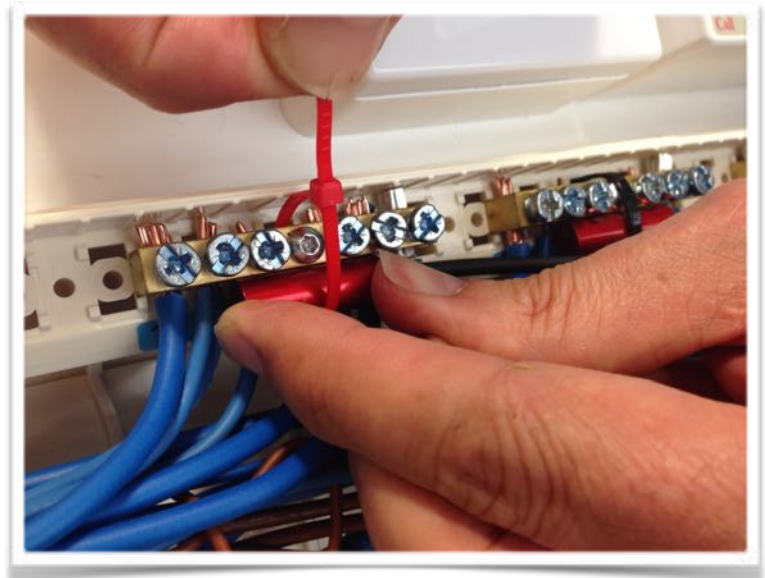
10. For the neutral bar place the supplied cable tie around the neutral bar. Please note that a separate T1150 device will be required for each neutral bar.



11. Place the T1150 close to the neutral bar and ensure the cable tie is installed around the T1150.



12. Place the free end of the cable tie into the head and pull tight. Ensuring the T1150 is in close contact with the neutral bar.

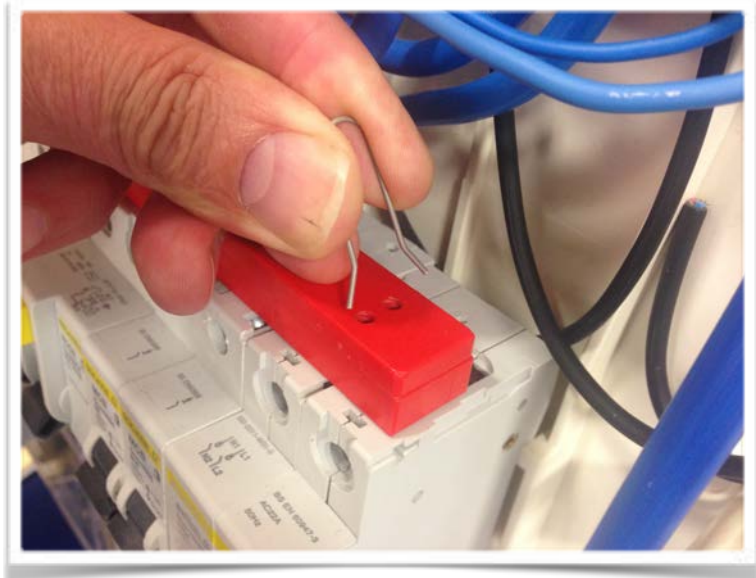


13. The cable tie should be trimmed and the black signal cable should be connected in parallel with the signal cable of each of the installed carriages.



After fitting the Thermarestor system please ensure that all connections points within the consumer unit/distribution board are checked for tightness in accordance with manufacturers torque settings.

14. Once all Thermarestor parts are installed and connected in parallel, check for continuity. As before the installation should be open circuit. Insert the supplied test clip into the carriage and replace the cover of the consumer unit/distribution board.



15. Energise the supply and ensure that any connected alarm system or interface device activates. Once this has been confirmed isolate the supply, remove the consumer unit / distribution board cover and remove the test clip.
16. Replace the cover, energise the supply and affix a label to state the following.

“This installation is protected by **Thermarestor**. Should abnormal temperatures be detected an alarm will be raised and you must take immediate action to contact a competent and suitably trained electrician to investigate and rectify the fault.”

The installation of Thermarestor is now complete.

Warranty

All Thermarestor products benefit from a significant investment in research and development, and from rigorous quality control procedures at all stages of manufacture.

A standard warranty period of 12 months is offered on Thermarestor products, from the date of purchase, relating to any material, or manufacture defect. This warranty period may be extended by a further nine years providing that:

- The system has been installed by a registered electrical contractor in accordance with manufacturers instructions and BS7671:2008 (as amended).
- Please see our website www.thermarestor.co.uk for full details regarding warranty, terms and conditions.



Thermarestor

Apson House, 3 Manchester Park, Tewkesbury Road, Cheltenham GL51 9EJ

Tel : 01242 509003

email: info@thermarestor.co.uk / warranty email: certification@thermarestor.co.uk